

Explore

Enjoy

Excel...

Be amazing!



St. Mary's CE VA Primary School

Welcome

Welcome to St Mary's CE VA Primary School, Yate.

The school is warm and welcoming, with a strong and supportive team, working hard to enable children to enjoy learning and thrive in school.

As Ofsted (2018) noted; 'Pupils and parents say the school is a safe place where staff are skilled and Caring' .

'The overwhelming majority of parents who responded to the Parent View survey believe that their children are happy and well looked after at school.'

As a Church of England Primary School, we are a school built upon Christian values and principles, believing that each child is unique and valued, with a great potential to contribute to the school community and to their world.

This prospectus gives an insight into our enriched school community, demonstrating how our vision and values are seen in the life of the school.

We would strongly encourage you to visit the school, to see for yourself a love of learning and the caring community of St Marys.



Valuing each child as a unique, talented individual, we encourage children to develop as moral, sociable, confident people, who aspire and achieve well across the curriculum. We aim to recognise ability in its broadest sense; encouraging interest, gifting and enthusiasm in sport, the arts, languages, sciences, computing and humanities, as well as in core subjects, such as Literacy and Numeracy. The impact of this is seen in academic results consistently above the national average, at both Key Stage 1 and Key Stage 2, leading Ofsted (2018) to judge St Mary's as a good school, where,

"Pupils achieve well at this school. Children in the early years thrive. A high proportion of children achieve a good level of development by the end of the Reception Year. Pupils make good progress throughout the school... By the end of Year 6, the proportion of pupils who attain the standard expected of them in reading, writing and mathematics is higher than seen nationally. You have high expectations of pupils and staff. You have successfully developed pupils' understanding of the school's values, and these highly positive values now shine through in the work of the school. "

Read on to find more about all our school has to offer for you and your child.

School Vision and values

At St Mary's School, we aim for all members of the school community to:

EXPLORE - ENJOY- EXCEL; Be amazing!

EXPLORE LIFE: gaining knowledge, understanding and skills, through exploration and enquiry, in an engaging curriculum.

EXPLORE FAITH: appreciating how the school's Christian values are threaded through all we do, believing every child is unique and special, with a purpose for life.

ENJOY LEARNING: developing a love of lifelong learning, both in and out of the classroom.

ENJOY BELONGING: celebrating diversity, encouraging care for ourselves and others, with a strong sense of belonging and respect.

EXCEL DAILY: enabling achievement across the curriculum, developing skills for life, making the most of personal gifts and talents.

As a CE VA primary school, we also value our Christian Distinctiveness.

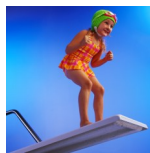
Psalm 139 sees David writing: "You are all around me—in front and in back— and have put your hand on me. Your knowledge is amazing to me; it is more than I can understand... You made my whole being; you formed me in my mother's body.

I praise you because you made me in an amazing and wonderful way. What you have done is wonderful."

This reflects the Christian belief that every child is unique and special; made in God's image, in 'an amazing and wonderful way.' It directs us to aim to provide the best of care for all children. From this we aim to develop 12 Christian Values in our pupils, shaping positive character development, to be the best we are made to be; to be amazing!



Hope



Courage



Responsibility



Respect



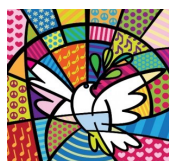
Trust



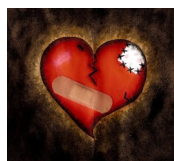
Truthfulness



Compassion



Peace



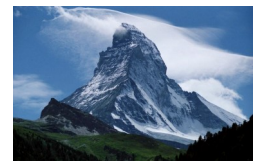
Forgiveness



Thankfulness



Friendship



Perseverance

The School, the Church and the Community

St. Mary's is in the town of Yate, South Gloucestershire. The school lies just north of the town shopping centre, next to St. Mary's Church in a mainly residential area.

The original school opened in Victorian times, with the present buildings replacing it in 1968.

The Central Hub provides a flexible workspace and has eight classrooms clustered around it, while the remaining 3 classes are in a separate block. We have a well-stocked library, a therapeutic space and our own school kitchen from which we serve hot meals daily. The buildings are set in extensive and attractive grounds, including engaging play spaces, grassed-sports fields, pond and wildlife areas.



St. Mary's is a Church of England (Voluntary Aided) Primary School. This means that whilst still working within South Gloucestershire Local Education Authority, the majority of our Governors are appointed by the Diocese of Bristol and the local church, as we work to maintain the distinctive Christian foundation of St. Mary's. We have close links to St. Mary's Church, its clergy and congregation.

We are constantly seeking to develop our engagement with the 'Unity' Hub, including one of our local secondary schools and five primaries. This is in addition to our contractual partnership with St Helen's school in Alverston.

The school takes children from 4 - 11, with a maximum intake of 45 in any one year group. Each of the 11 classes is mixed ability, and taught in the main by one teacher, or a job-share, supported by additional teachers and classroom assistants.



From year 1 classes are organised into phases with children in year in mixed aged groupings and working together as phases. In Key Stage 1 children are organised in three year 1 and 2 classes, in lower Key Stage 2 we have 3 classes made up of children in year 3 and year 4 and in upper Key Stage 2 children are usually organised into 3 classes of children in years 5 and 6. This 'phase' approach enables us to revisit and extend learning across a two year period ensuring that learning is fully embedding before children move into their next developmental stage of learning.

At St Mary's we are also fortunate enough to have the support of staff working in the office, kitchen, in caretaking and cleaning, as well as a team of midday supervisors.

Together aim to provide a caring environment where all children are helped to learn, and to develop academically, socially and emotionally. We emphasise the positive attitudes and behaviour, which are needed in order that everyone can be safe, happy and achieve well. 'Pupils and parents say the school is a safe place where staff are skilled and caring' Ofsted 2018



Our Aims

We believe that the school should help children to grow up as responsible, thoughtful and confident adults, who are able to manage their own lives and play an active part in our complex and changing society.

Therefore we aim to:

- teach all children key skills across the curriculum, enabling them to achieve the highest possible standards.
- encourage all children to be enthusiastic, independent learners who take pride in their aptitudes, achievements and the quality of their work.
- foster in all children positive and caring attitudes towards themselves, the school and the wider community.
- encourage in all children a growing awareness of the spiritual dimension of life, and particularly how Christian values and beliefs can shape our lives today.

At St. Mary's we share the commitment of South Gloucestershire Council and the Diocese of Bristol, to ensuring that every child has equal educational opportunities - regardless of gender, age, ethnic background and culture, religion, disability or disadvantage.

We believe that all these aims will be best achieved through an active partnership of children, parents, staff and Governors all respecting diversity.



A Healthy School

We aim to enable children at St. Mary's to be physically, mentally and emotionally healthy. Healthy lifestyles are encouraged in a number of ways, such as

- Regular PE lesson covering many different sports, supported by professional sports coaching
- A variety of active after school clubs
- Encouraging children to drink water
- Free fruit for EYFS and KS1.
- Participating in local sporting events
- Learning about changes that take place in our bodies when we exercise, and eat healthily.
- Learning about healthy relationships in a way that is appropriate for the child's age and level of development
- The commitment to fostering good mental health of pupils through the delivery of the Thrive programme and a team of teaching assistants trained to support pastoral needs.



Enjoying and Achieving

At St. Mary's we want children to get the most out of life and develop the skills they will need for their secondary education and indeed for life.

We achieve this through...

- Excellent early years provision which promotes children's development and wellbeing, in a rich inside and outside learning environment.
- Delivering the national curriculum through a play-based continuous provision until the children enter year 3
- A strategy around outdoor play which recognises the importance of child development through 'unstructured' time in school
- Encouraging good attendance, only authorising absence in 'exceptional circumstances.'
- Providing a good range of after school clubs
- Promoting good behaviour to enable all children to access our exciting curriculum
- Through valuing music and the arts
- Through a carefully planned curriculum that encourages children to engage in global themes and develop their 'Brave Changemaker' skills.



Safeguarding

At St. Mary's school we care for your children and provide a safe environment for your children where they can be protected from harm. We do this by...

- Prioritising pastoral care through the 'Thrive' approach to social and emotional wellbeing
- Teaching a carefully designed programme of social and emotional aspects of learning
- Keeping safety central to our computing curriculum
- Fenced area for the early years children to explore as part of their continuous provision
- Secure entry into the school building
- Providing pastoral support for individual children in vulnerable situations.
- Working closely with outside agencies including social services, school nurse and the educational psychologist
- Working with parents to support children at times need eg. bereavement, separation

This led Ofsted (2018) to observe:

“you have established a strong and open culture of safeguarding.”

“The school's arrangements for keeping pupils safe are effective...”

You keep detailed and accurate records of any concerns that staff have about pupils' welfare and the action that is subsequently taken. You follow up tenaciously if you are not satisfied with the response of other agencies when they are notified.”

We also teach the children how to keep themselves safe and how to become responsible, thoughtful citizens. Here are just some of the ways we do this....

- Swimming lessons for all in Year 3 and non-swimmers in Y5/6.
- Providing a curriculum through which the children learn values for life
- Inviting members of the local community into school such as dentist, doctor, nurse, fire brigade
- Providing cycling proficiency and training
- Visiting the Life Skills centre
- Providing first aid training to year 6 children.



Making a Positive Contribution

At St. Mary's we want children to be fully involved in not only the school community but also the local community and society as a whole. We want them to be responsible global citizens.

To achieve this...

- Children are involved in decision making through their involvement in a school council
- Older children are trained as 'play leaders' to support younger children at play
- Pupil curriculum teams such as the Ethos Team support subject leaders in monitoring and championing subjects
- Circle time and class worship allows children the opportunity to speak and be listened to.
- Christian Values are central to everyday school life, with values celebrated in Friday assemblies.
- Children are actively involved in supporting charities.
- Children develop 'Brave Changemaker' skills such as critical and creative thinking, conflict resolution and communication to enable them to have a positive contribution on society.



Partnership with St Helen's

In May 2019, St Mary's formed a partnership with St Helen's Primary School in Alveston.

Our Mission: *Growing together, pursuing life in all its fullness*

The communities of St Mary's and St Helen's Primary Schools are passionate about our two schools. We want to see them grow and develop to deliver the best possible opportunities and experiences for our pupils. We believe that a partnership between the two schools is a fantastic way for us to do that.

It is our aim that the two communities grow together, sharing with and learning from each other, respecting and retaining the individuality that we love so much. Rooted firmly in our shared Christian values and distinctive Christian ethos, we believe that partnership will enable us to achieve more. Growing together, we will enhance opportunities for **excellence, enjoyment and exploration** within the schools with the aim of improving pupils' **achievement** and enriching their experiences, preparing them for the next phase of their learning and life.

'To dare more boldly.

To venture on wider seas where storms will show God's mastery;

Where losing sight of land, we shall find the stars.'

Prayer of Sir Francis Drake, explorer, 1540-1596.

Partnership Principles:

Our principles are set to enable us to achieve the aims in our school's individual vision statements, where we found real commonality:

St Helen's: Excellence, Enjoyment and Achievement together

St Mary's: Enjoy, Explore, Excel: Be amazing

Partnership for Excellence	Collaborating at all levels, building capacity for leadership and striving together for excellence. <i>Creating communities for learning where we empower new and innovative development opportunities. Sharing excellent practice and growing leaders of learning across the partnership.</i>
Partnership for Enjoyment	Enriching our learning and experiences, fostering enjoyment. <i>Sharing skills and expertise to enrich and develop a creative and immersive curriculum. Sharing our experiences, creating new and exciting opportunities to have fun and learn together.</i>
Partnership for Exploration	Continuously improving, innovating and exploring. <i>To stretch and challenge each other at all levels to deepen our learning and encourage exploration. To spread the impact of this learning across the partnership and beyond, into the communities.</i>
Partnership for Achievement:	Working together to raise outcomes, keeping children's achievement at the very centre of everything we do. <i>Driving improvements in children's achievement by learning from each other and re-aligning roles so that they can be more sharply focussed on developing the quality of teaching, behaviour, learning and outcomes.</i>

St Helen's and St Mary's Primary School Partnership
Growing together, pursuing life in all its fullness

Partnership for Excellence

Collaborating at all levels, building capacity for leadership and striving for excellence.

Partnership for Enjoyment

Enriching our learning and experiences, fostering enjoyment.

Partnership for Exploration

Continuously improving, innovating and exploring.

Partnership for Achievement

Working together to raise outcomes, keeping children's achievement at the very centre.



St Helen's
CE Primary School

ST MARY'S SCHOOL



YATE

Truthfulness

Justice

Forgiveness

Hope

Friendship

Peace

Generosity

Responsibility

Trust

Compassion

Perseverance

Courage

Thankfulness

Service

Respect

Admissions Policy

Supplementary Form for Admission to Year Reception in Sept 2024 Section B

This part of the form is to be completed by the church representative only.

Guidance notes for Church Representatives

Please read these guidance notes very carefully before agreeing with the level of involvement of the Parent/Carer and/or child in your church or place of worship:

We require the signature of one person who holds a position of responsibility in the place of worship but who must not be related in any way to the applicant.

It is hoped that the Parent/Carer has made an appointment with the person of responsibility in the place of worship, to discuss this application. If you disagree with the Parent/Carer's description of their involvement, please indicate this, together with an explanation.

To help you decide into which group the applicant fits, descriptions of the groups are printed below. Please note where a Parent/Carer has indicated a second Church in Box 3 of the Supplementary Form, please allocate to a group based solely on frequency of attendance at your church.

Church / Place of Worship representatives must confirm if the **Parent/Carer** and/or the child are regular worshippers. We define regularity in this context under three groups:

*Group 1: The child is a member of Group 1 if the Parent / Carer and/or the child are very regular worshippers. This means attending **worship** at a **Christian Church/Place of Worship** three or more times a month for a minimum of the last three years as at the date of application.*

*Group 2: The child is a member of Group 2 if the Parent / Carer and/or the child are regular worshippers. This means attending **worship** at a **Christian Church/Place of Worship** two or more times a month for a minimum of the last two years as at the date of application.*

*Group 3: The child is a member of Group 3 if the Parent / Carer and/or the child are occasional worshippers. This means normal attendance for **worship** at a **Christian Church / Place of Worship** is a minimum of once a month during the past year as at the date of application.*

In this context a Christian Church / Place of Worship means:

The Church of England or other Anglican Church, or

A Christian church which is in membership of Churches Together in England (or its partner bodies in Scotland, Wales & Ireland), or Church or a congregation, which can provide evidence of affiliation to the Evangelical Alliance.

'Worship' in the above context includes not only Sunday services, but also weekday ones and it includes Sunday School or equivalent on a Sunday or on another day, so long as the group is primarily about worship. 'Minimum of years': **Parents/Carers** should calculate the minimum number of years' attendance as including the period up to the date of completion of the application form.

In the event that during the period specified for attendance at worship, the church / place of worship has been closed for public worship and has not provided alternative premises for that worship, the requirements of these admission arrangements in relation to attendance will only apply to the period when the church / place of worship has been open, or when alternative premises have been available for public worship.

This must be confirmed by the church representative. Please reiterate to the Parent/Carer that the **Local Authority's Common Application form must also be filled in and returned to the Local Authority**, whereas this **supplementary form must be returned direct to St Mary's CE VA Primary School**. Both forms must arrive at their respective destinations by the admissions closing date, as set by the Local Authority

Thank you very much for your help and time in this process.

Supplementary Form for Admission to Year Reception in Sept 2024 Section B

This part of the form is to be completed by the church representative only.

We, being the authorised representatives of,
(Place of Worship) have read the guidance notes of this form and believe that the application falls with-
in the category below:

Decide which description comes closest to describing the parent/carer, or their child's involve-
ment in the place or worship.

Place a tick against ONE of the groups below:

Regular Attendance	Group 1	Group 2	Group 3
Not regular Attend-			

This section should not be signed by any relative of the applicant Please ensure that you have ticked one
of the above boxes before signing below. If your decision on the regularity of attendance differs from
that of the parent, please indicate briefly why, including any extenuating circumstances:

Please complete the following in **BLOCK CAPITALS**:

Name:	
Signature	
Position of Responsi-	
Contact Address:	
Telephone Number:	
Email Address:	

Both parts of the Supplementary form must be completed and returned to their correct destinations by the
closing date.

If you would like confirmation of safe receipt of your Supplementary Form, please enclose a stamped ad-
dressed postcard.

4: Declarations

One Parent / Carer must sign the following statement:

“I verify that the information given above is true and accurate.”

Signed:	Date:
---------	-------

Now take the complete ‘Supplementary Form’ to the minister, leader or authorised representative of your place of worship.

Please note that the form must be signed by one person who holds a position of responsibility in the church or place of worship; this will, for example, include the priest, minister or pastor, churchwarden, steward, elder or deacon, Sunday school or youth leader but must not include anyone related in any way to the applicant.

Should the Governors find any discrepancy in the information given before the term of entry, they reserve the right to re-consider any place offered.

Supplementary Form for Admission to Year Reception in Sept 2023

Section B

This part of the form is to be completed by the church representative only.

Guidance notes for Church Representatives

Please read these guidance notes very carefully before agreeing with the level of involvement of the Parent/Carer and/or child in your church or place of worship:

1. We require the signature of one person who holds a position of responsibility in the place of worship but who must not be related in any way to the applicant.
2. It is hoped that the Parent/Carer has made an appointment with the person of responsibility in the place of worship, to discuss this application. If you disagree with the Parent/Carer's description of their involvement, please indicate this, together with an explanation.
3. To help you decide into which group the applicant fits, descriptions of the groups are printed below. Please note where a Parent/Carer has indicated a second Church in Box 3 of the Supplementary Form, please allocate to a group based solely on frequency of attendance at your church.

Church / Place of Worship representatives must confirm if the **Parent/Carer** and/or the child are regular worshippers. We define regularity in this context under three groups:

*Group 1: The child is a member of Group 1 if the Parent / Carer and/or the child are very regular worshippers. This means attending **worship** at a **Christian Church/Place of Worship** three or more times a month for a minimum of the last three years as at the date of application.*

*Group 2: The child is a member of Group 2 if the Parent / Carer and/or the child are regular worshippers. This means attending **worship** at a **Christian Church/Place of Worship** two or more times a month for a minimum of the last two years as at the date of application.*

*Group 3: The child is a member of Group 3 if the Parent / Carer and/or the child are occasional worshippers. This means normal attendance for **worship** at a **Christian Church / Place of Worship** is a minimum of once a month during the past year as at the date of application.*

In this context a Christian Church / Place of Worship means:

- The Church of England or other Anglican Church, or
- A Christian church which is in membership of Churches Together in England (or its partner bodies in Scotland, Wales & Ireland), or
- Church or a congregation, which can provide evidence of affiliation to the Evangelical Alliance.

'Worship' in the above context includes not only Sunday services, but also weekday ones and it includes Sunday School or equivalent on a Sunday or on another day, so long as the group is primarily about worship. 'Minimum of years': **Parents/Carers** should calculate the minimum number of years' attendance as including the period up to the date of completion of the application form.

In the event that during the period specified for attendance at worship, the church / place of worship has been closed for public worship and has not provided alternative premises for that worship, the requirements of these admission arrangements in relation to attendance will only apply to the period when the church / place of worship has been open, or when alternative premises have been available for public worship.

This must be confirmed by the church representative. Please reiterate to the Parent/Carer that the **Local Authority's Common Application form must also be filled in and returned to the Local Authority**, whereas this **supplementary form must be returned direct to St Mary's CE VA Primary School**. Both forms must arrive at their respective destinations by the admissions closing date, as set by the Local Authority

Thank you very much for your help and time in this process.

Supplementary Form for Admission to Year Reception in Sept 2023

Section B

This part of the form is to be completed by the church representative only.

We, being the authorised representatives of,
(Place of Worship) have read the guidance notes of this form and believe that the application falls within the category below:

Decide which description comes closest to describing the parent/carer, or their child's involvement in the place or worship.

Place a tick against ONE of the groups below:

Regular Attendance	Group 1	Group 2	Group 3
Group			
Not regular Attendance			
Attendance			

This section should not be signed by any relative of the applicant Please ensure that you have ticked one of the above boxes before signing below. If your decision on the regularity of attendance differs from that of the parent, please indicate briefly why, including any extenuating circumstances:

Please complete the following in **BLOCK CAPITALS**:

Name:	
Position of Responsibility:	
Contact Address:	
Telephone Number:	
Email Address:	

Both parts of the Supplementary form must be completed and returned to their correct destinations by the closing date.

If you would like confirmation of safe receipt of your Supplementary Form, please enclose a stamped addressed postcard.

If you would like to find out more
about our school please have a look
on our website or contact the school

office email:

office@stmarysyate.org.uk

St. Mary's CE Primary School
Church Road

Yate

BS37 5BG

Tel. 01454 867 155

www.stmarysyate.org.uk

